

NOTICE TO ALL CONTRACTORS AND SUB-CONTRACTORS - June 17, 2016

Architecture  
Interior Design  
Graphic Design  
Facility Planning

**Astra Bank, New Building, Abilene KS** –Project No. 15-2698

**ADDENDUM NO. 3**

**YOU ARE INSTRUCTED TO READ AND TO NOTE THE FOLLOWING DESCRIBED CHANGES, CORRECTIONS, CLARIFICATIONS, OMISSIONS, DELETIONS, ADDITIONS, APPROVALS AND STATEMENTS PERTINENT TO THE CONTRACT AND CONSTRUCTION DOCUMENTS. THIS ADDENDUM IS A PART OF THE CONTRACT AND CONSTRUCTION DOCUMENTS AND SHALL GOVERN IN THE PERFORMANCE OF THE WORK.**

**APPROVALS & SUBSTITUTIONS**

1. Section 04720, Heritage Cast Stone, Approved for bidding.
2. Section 07611, Firestone UC-6 Roof, UC-500 Soffit, Approved for bidding.  
Sno-Gem, iClad-S System Snow Guards Approved for bidding.
3. Section 07421, Firestone UR Pro-Omega Metal Wall, Approved for bidding.
4. Section 08111, Mesker, Approved for bidding
5. Section 08211, Eggers Ind., Approved for bidding

**ARCHITECTURAL –Specifications**

1. Section 07611, Pe-Manuf Sheet Metal Roofing  
Paragraph 2.06 Roof Insulation, A. in lieu of EPS 15, Provide ASTM C578 type.

**ARCHITECTURAL –Drawings**

2. Sheet CFP, Site Plan  
The Fire Hydrant shown east of the parking lot, is not correct, thus disregard. The existing Fire Hydrant is located south of eagle drive, reference the survey.

Jeff Gillam  
Charles Renz  
Mark Regier

**ELECTRICAL – Drawings**

1. Sheet E1.1 – 2<sup>nd</sup> Floor Lighting Plan: Modify the identification tag for two downlights above Stair S2 from ‘C1’ to ‘C6’.
2. Sheet E6.1 – Light Fixture Schedule: Modify Light Fixture Schedule to add the following fixture:
  - a. Type ‘J1’: 24” Square semi-flush bowl with crossbar, faux alabaster resin shade, dark bronze finish, 12” OAH, 65 watt LED with output of 5000 lumens. Justice Design Group #FAL-9712-25-DBRZ.

**ELECTRICAL –SPECIFICATIONS**

1. Substitutions – Subject to compliance with requirements, the following manufacturers may provide Light Fixtures as indicated.
  - A. Type ‘A2’, ‘A3’ – Cree
  - B. Type ‘B3’, ‘B4’ – CGF Design
  - C. Type ‘C4’, ‘C6’, ‘C8’ – Indy, Pathway Lighting
  - D. Type ‘E’ – Chloride, Exitronix
  - E. Type ‘F’, ‘G’ – Columbia Lighting, Day-Brite
  - F. Type ‘H’ – Airey-Thompson
  - G. Type ‘K’ – Electrix, Prudential Ltg
  - H. Type ‘L’ – a-light, Lumium
  - I. Type ‘R’ – Architectural Area Lighting
  - J. Type ‘S1’, ‘S2’, ‘T’ – Cree, Gardco
  - K. Type ‘U’ – Beacon
  - L. Type ‘V’ – Hadco
  - M. Type ‘W’ – Cree, Stonco
  - N. Type ‘X’, ‘X2’, ‘XR’ – Dual-Lite, Evenlite



730 N. Ninth (67401)  
P.O. Box 2928  
Salina, KS 67402-2928  
(785) 827-0386  
Fax (785) 827-0392

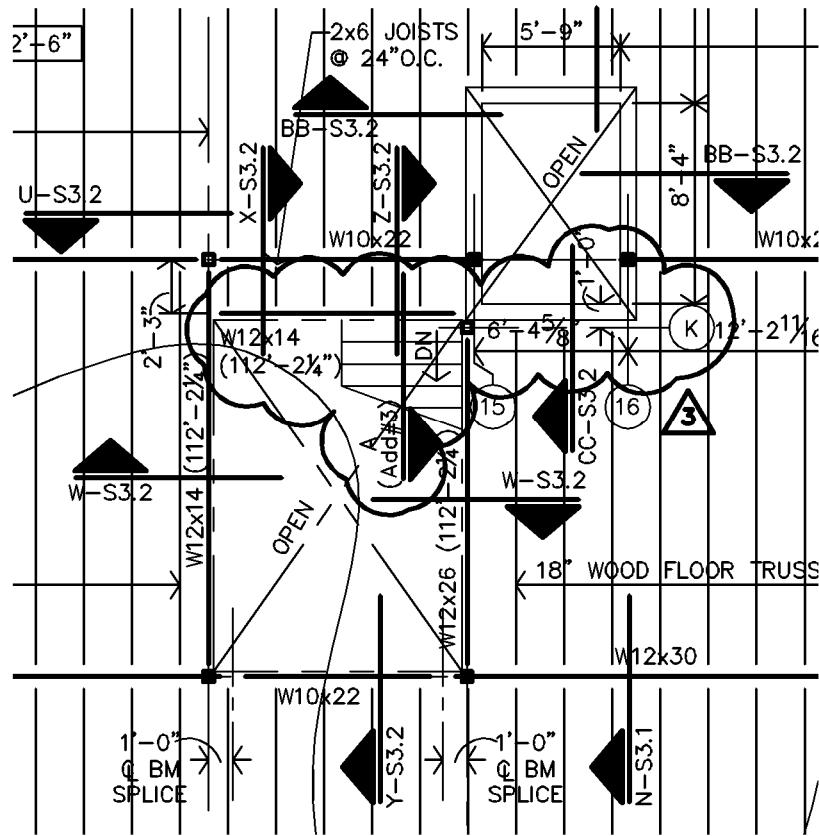
**STRUCTURAL**

1. Sheet S3.1,
  - a. See attached Partial Second Floor Framing Plan
  - b. See attached new Section A
2. Sheet S3.3, Section G, steel beam is W14x34

Receipt of this Addendum shall be noted on the Bid Form.

END OF ADDENDUM NO. 3

Attachments  
Structural Partial 2<sup>nd</sup> Flr Framing Plan  
Structural Section A



## PARTIAL SECOND FLOOR FRAMING PLAN

1/8" = 1'-0"

ADDENDUM #3

**JGR**  
**JONES GILLAM RENZ**  
*Architects Planners Designers*  
 730 N. Ninth,  
 P.O. Box 2928  
 Salina, KS 67402  
 (785) 827.0386 PH  
 (785) 827.0392 FAX

**ASTRA BANK**  
**NEW BANK & OFFICE BUILDING**  
**ABILENE, KANSAS**

DATE: 6-15-2016  
 JOB #: 15-2698

**1**

