

ADDENDUM NUMBER TWO

May 31, 2016

MARYSVILLE ELEMENTARY SCHOOL ADDITION AND REMODEL
1010 CAROLINA STREET
MARYSVILLE, KANSAS

The following addendum items amend the Drawings, Specifications, and other Project Manual documents prepared by The Ebert Mayo Design Group, Architects & Planning Consultants, 1115 Westport Drive, Manhattan, Kansas 66502.

Planholders shall attach this addendum to their copy of the Project Manual. Bidders shall acknowledge receipt of this addendum on the Proposal Form.

The bid date remains unchanged. Bids will be received in accordance with the Notice to Bidders included in the Project Manual until 2:00 pm, June 2, 2016, in the cafeteria of Marysville Junior/Senior High School, 1011 Walnut, Marysville, Kansas.

PART 1 - ADDENDUM ITEMS

1.1 **Reminder**

- A. General Contractors who have not had a contract with Marysville USD 364 in the past five years are required to submit a qualifications statement with their bid. See the Instructions to Bidders.

1.2 **Section 07 5213, Atactic-Polypropylene (APP) Modified Bituminous Roofing**

- A. The Garland Company, Inc. roofing provided under the base bid shall be their cold-applied SBS modified roofing membrane system.

1.3 **Section 08 7110, Door Hardware**

- A. Door hardware group I is for doors 114A, 206, 207.

1.4 **Sheet A4.1, Door Schedule**

- A. Door sizes for V1, V2, V3 and V4 are changed to 3'-0" x 3'-4" x 1 3/4".
- B. Door 118A is a HM door in lieu of a SCW door.

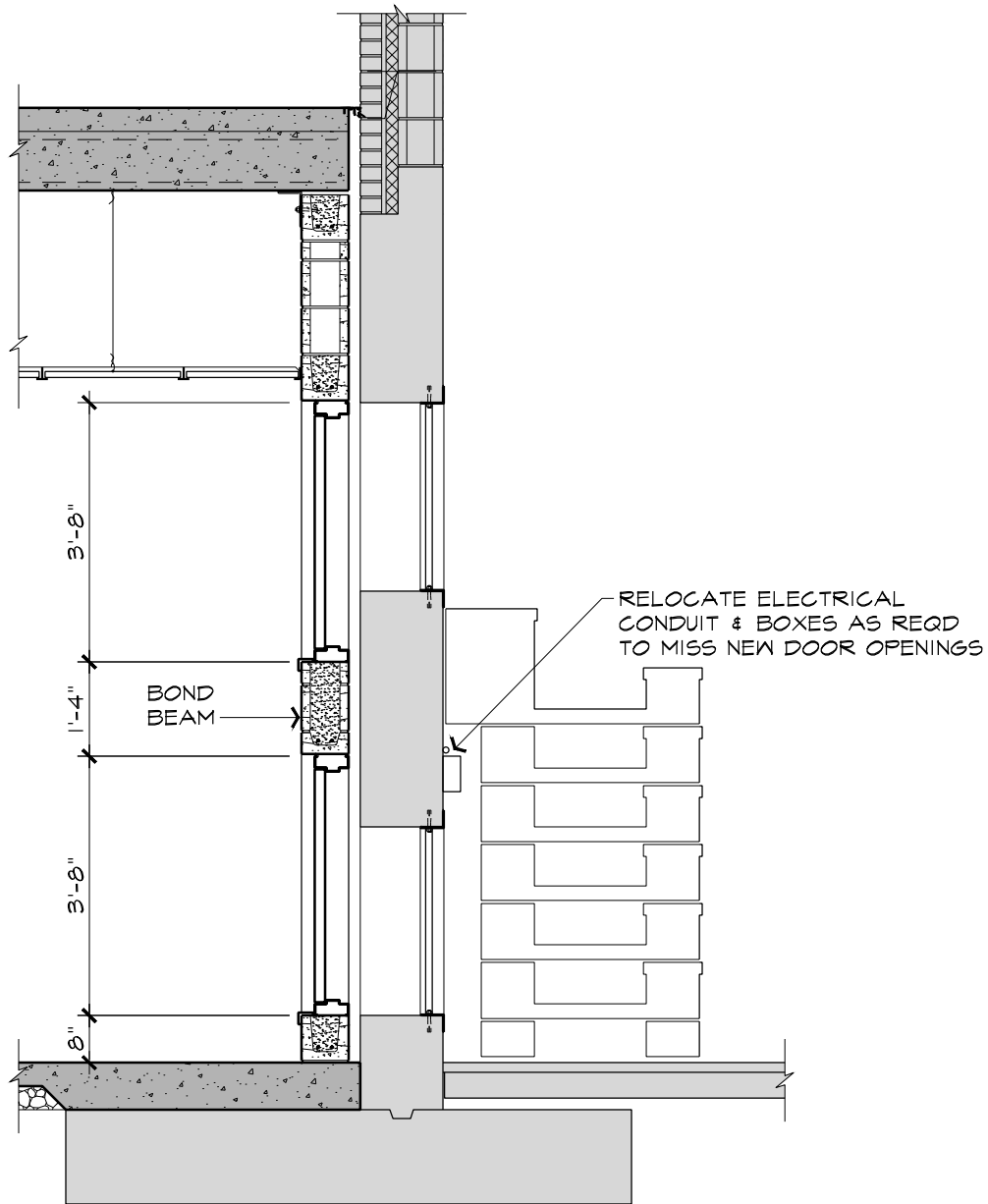
1.5 **Sheet A5.2, Signage Types**

- A. Provide signs for all rooms within the building, both existing and new construction. Coordinate signage schedule with the Architect and Owner.

1.6 **Drawing A1, Ventilation Opening Detail**

- A. The attached drawing shows the revised wall construction at the new storm resistant ventilation doors.

END OF ADDENDUM TWO



VENTILATION OPENING DETAIL

3/8" = 1'-0"



The Ebert Mayo Design Group
Architects & Planning Consultants

1115 Westport Drive
Manhattan, Kansas
66502-2873
(785) 776-1800 tel
(785) 776-9906 fax
www.EMGArch.com
© 2010-2016

Marysville Elementary School Addition and Remodel
1010 Carolina Street - Marysville, Kansas

Marysville Schools, USD 364
211 South 10th
Marysville, Kansas 66508

PROJECT
DATE
REVISION

P1510.01
May, 2016

DRAWING

A1

ADDENDUM #2